

The Palace Hotel

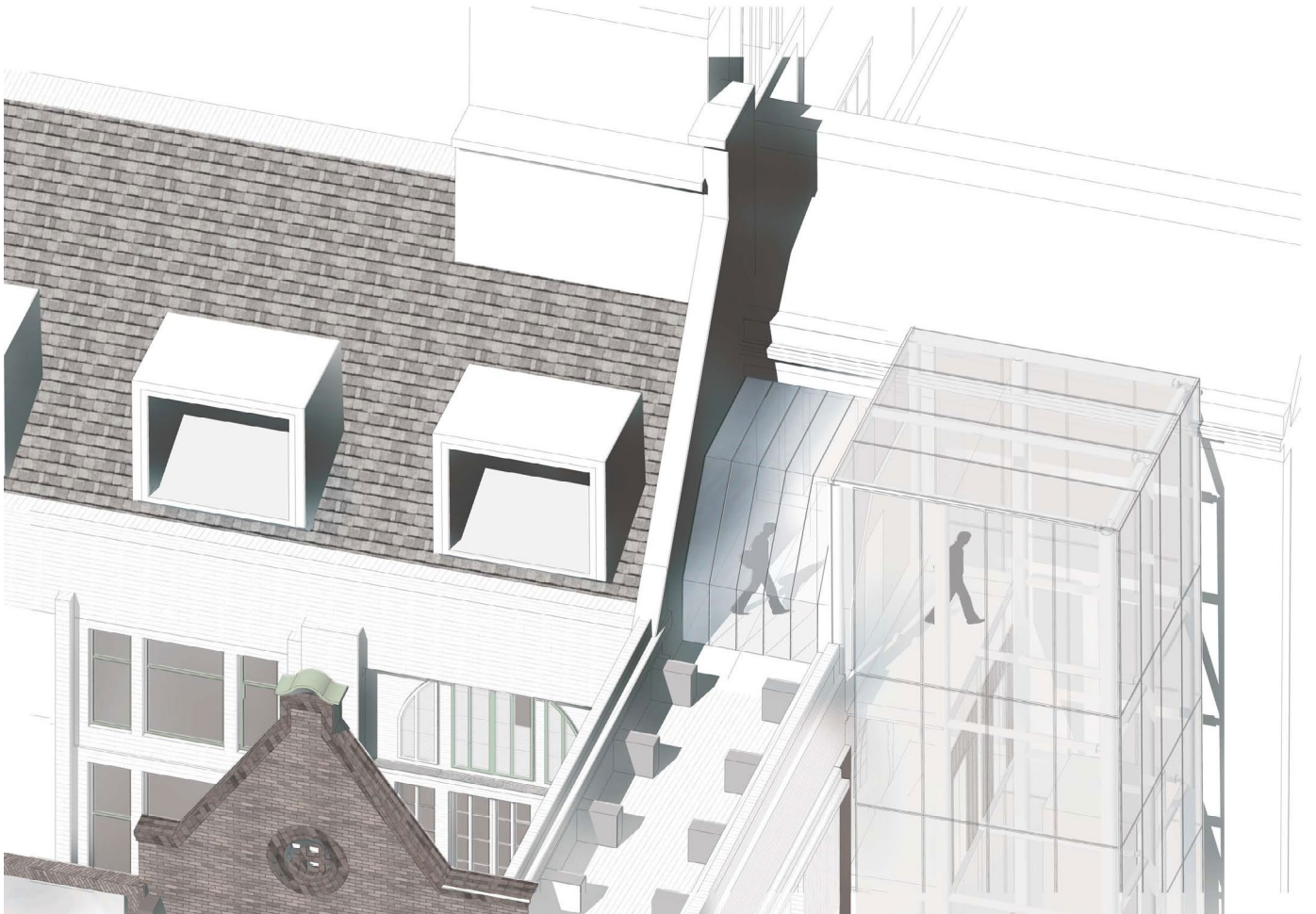
Grade 2 Listed Hotel Refurbishment

Key Facts

Location: Manchester
Client: Starwood Capital
Value: £25 000 000

Responsibilities

Planning Application
Zoning Plans
SI Scoping Plans
Coordinating Archive Data
Co-ordinating Tender Package
Specification of Adaption



Broadgate Arena

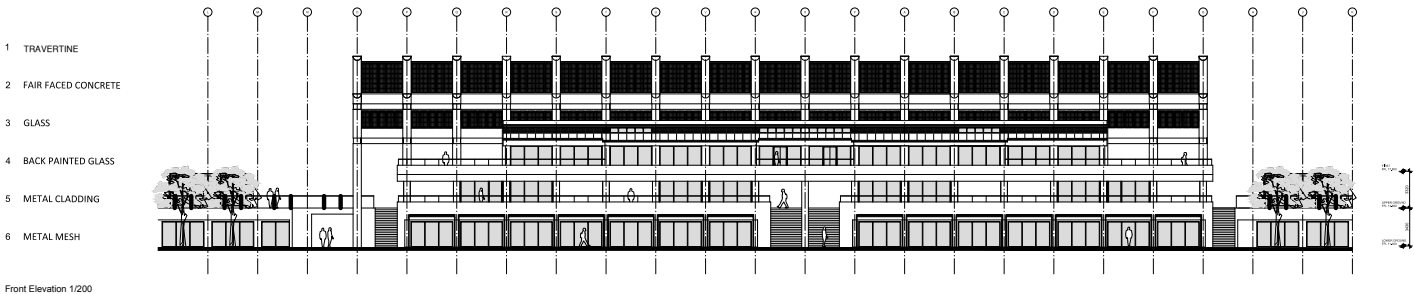
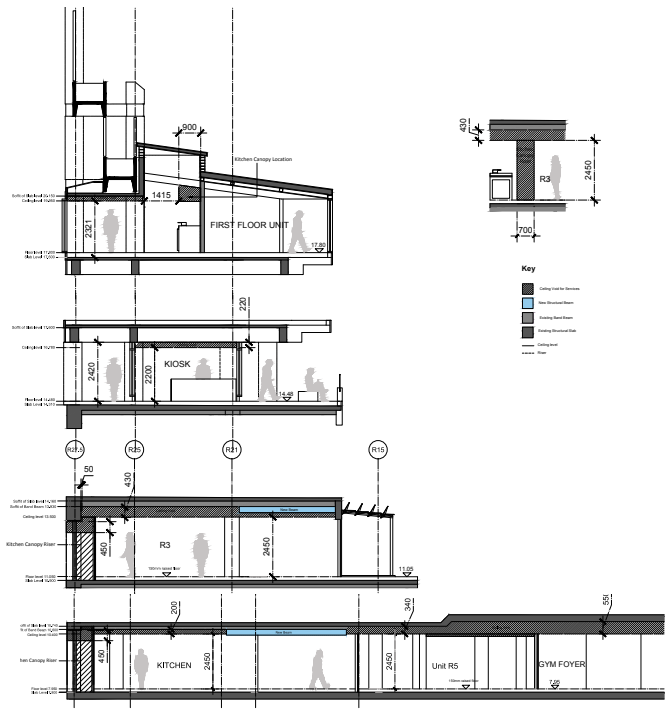
Civic Regeneration

Key Facts

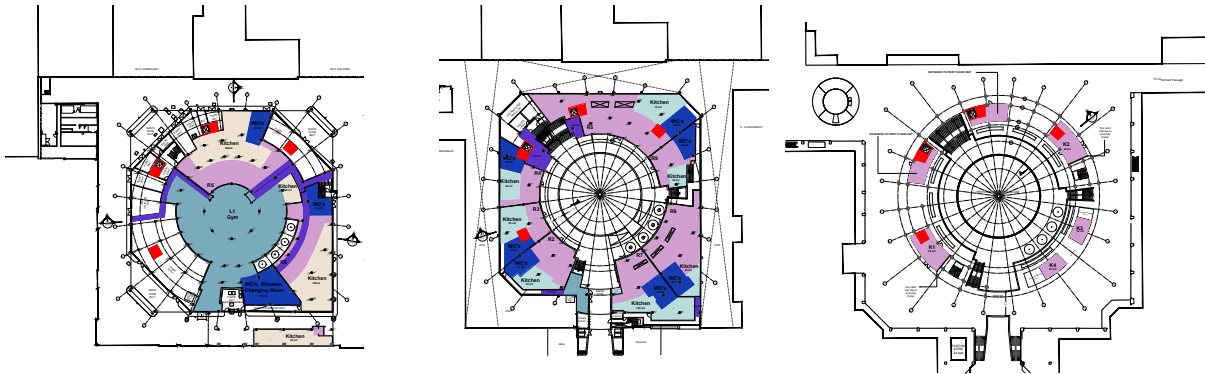
Location: City of London
Client: British Land
Value: Confidential

Responsibilities

Research for Feasibility Study
Production of Planning Drawings
Site Visits
Client Meetings
Coordination of Constraints Package



Front Elevation 1/200

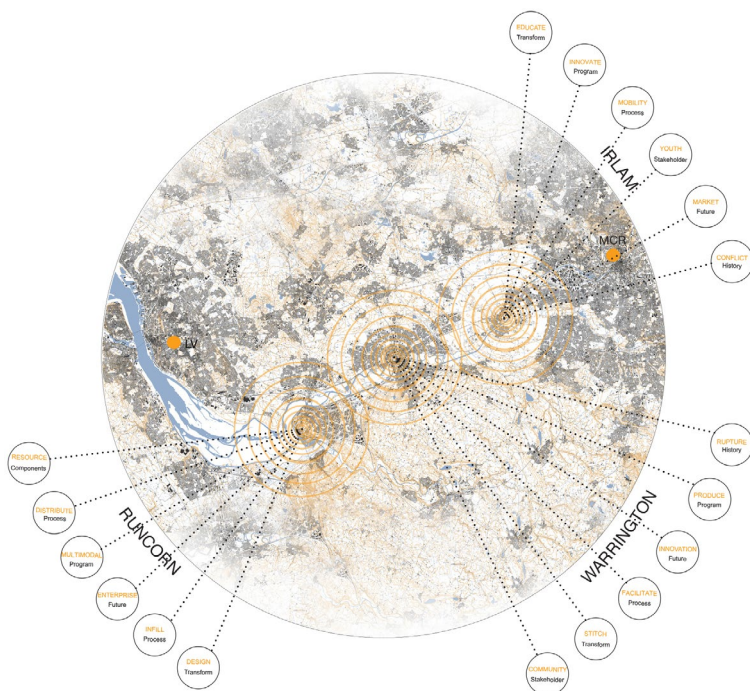


Reciprocus

International Competition, Winner



Fig. 1



RECIPROCUS | Pioneering Urban Regeneration Concept
Winner, International Competition, Think.Space. 2014

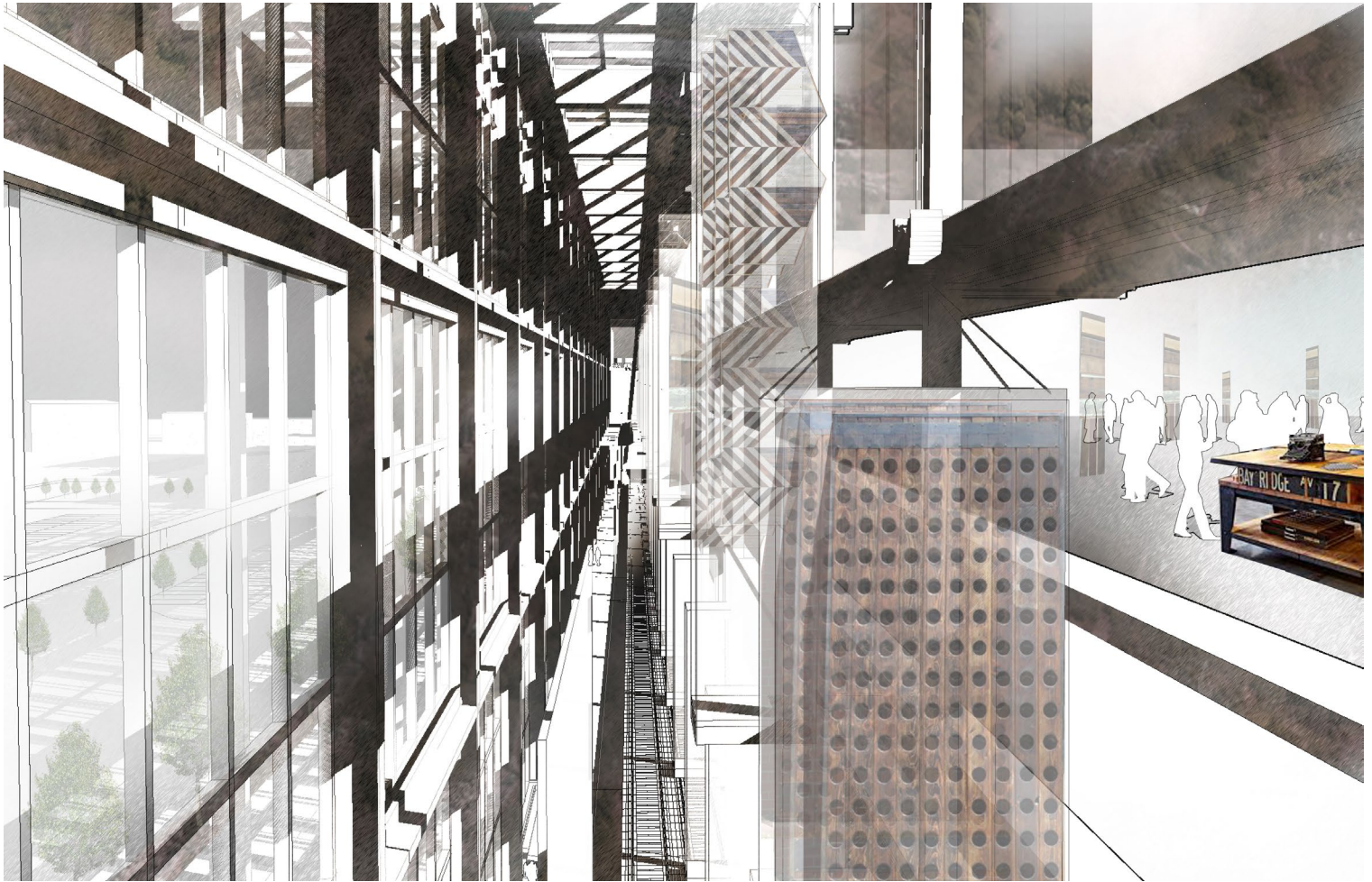
"Reciprocus: Make, Move, Manage relies on an ambitious plan to give new sense to areas that have been typically neglected by recent developments in late capitalist societies. It addresses a system of waste and discarded resources - be it in human skills or material culture - by way of adaptive reuse and forms of planning that welcome bottom-up initiatives.

Opposing urban shrinkage, three types of operations revitalize urban areas along the once thriving, and now declining Manchester Ship Canal. Based on local exchanges such as time banks and idealistic community engagement, the three steps of the Reciprocus program are brought to interaction through an engaging architectural fiction focused on 'amplifying the inefficiency of contemporary society.' Refusing architecture as a mere service provider in an established economic cycle, the proposal presents architects taking the role of mediators in new creative ways."

Pedro Gadanho, Curator of Contemporary Architecture, MoMA, New York, 2014

The Component Archive

Interactive Cultural Centre, Exhibition and Workshop



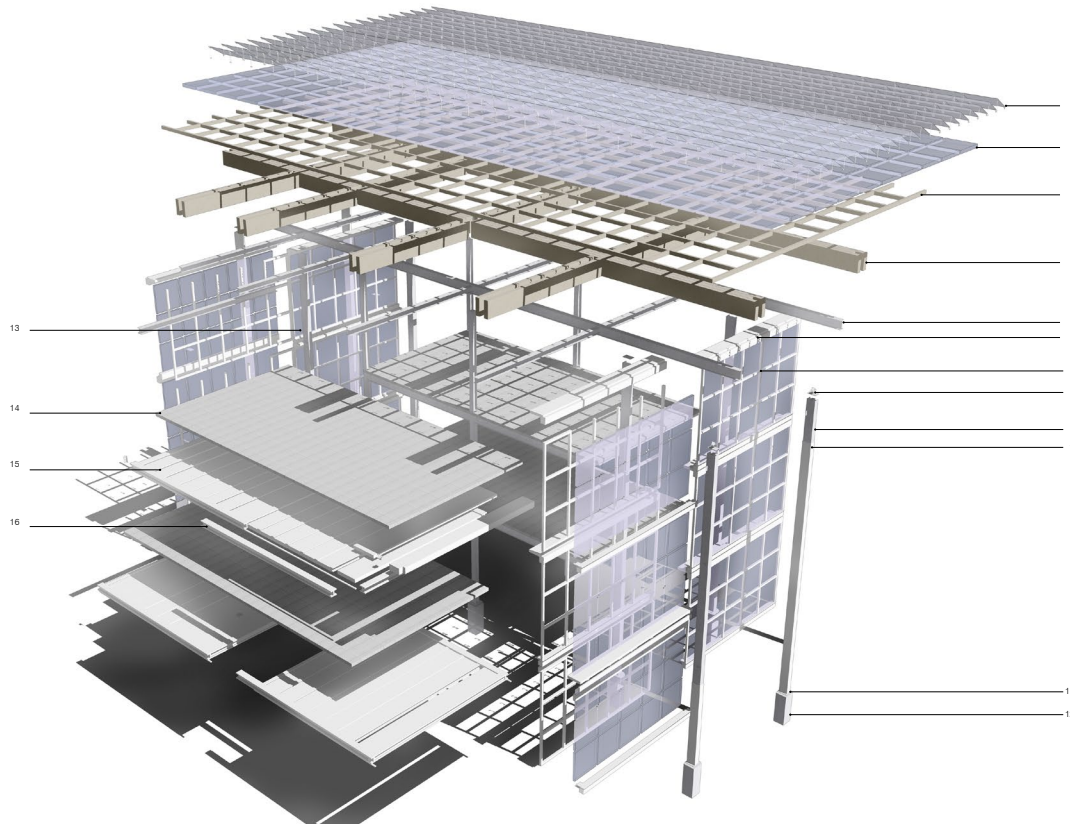
THE COMPONENT ARCHIVE

RIBA Part II Thesis

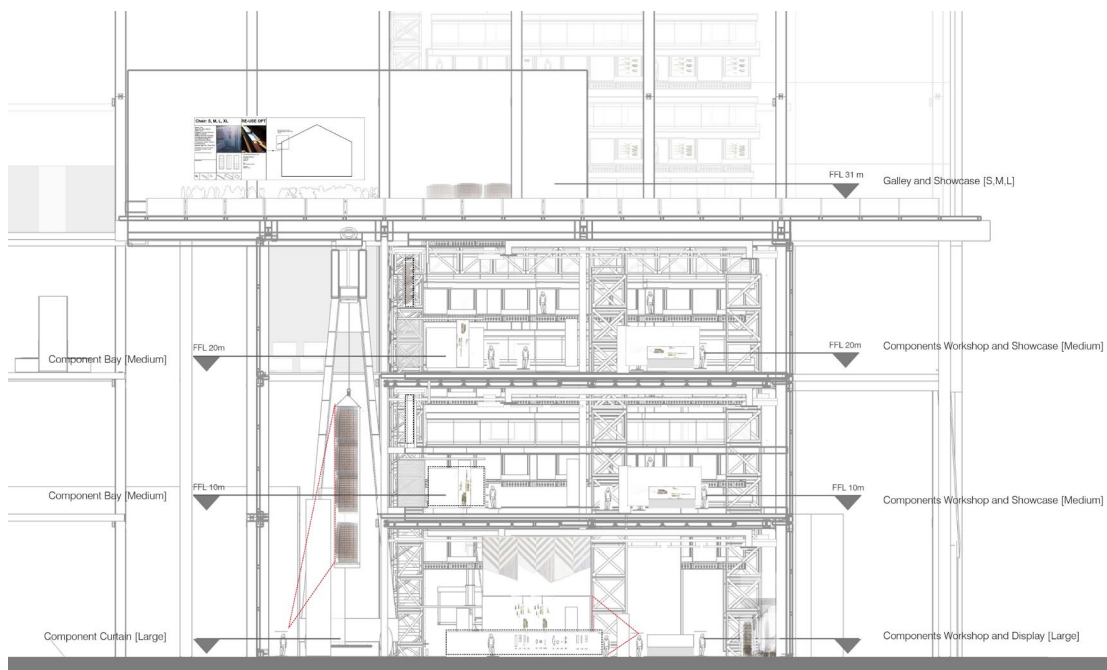
The 'Component Archive' is an experimental interactive exhibition and workshop that exists as part of the Reciprocus Network to inspire inhabitants along the Manchester Ship Canal to view every day and industrial waste from a new perspective. It is located at Weston Point Docks, a multi-modal accessed site in Runcorn. The program is based on a systematic approach to revaluing waste products by recording how users deconstruct and reassemble waste materials. The output is the production of a virtual and physical 'database of ideas', which provide an ever-expanding library of material knowledge, examples and strategies for deconstructing and re-purposing used components to create new products. This database is used to generate a global guide for re-purposing city waste.

The Component Archive

Technical Detailing

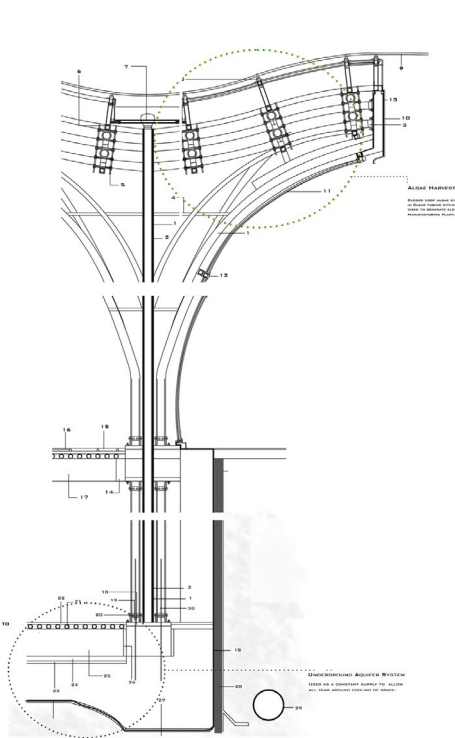


1. Sun Screens - 12mm thick, Recycled tempered glass plates, screen-printed to filter out 50% of the southern sun light. Cast steel elements rise off this grid to support the sun screens, which are set at an angle above the glass roof. Natural light penetrates through the filters in the roof to upper workshop, studio and exhibition spaces.
2. Welded grid of 300 x 180mm steel box beams support horizontally laid recycled glass infill 3000 x 3000mm, weather-tight seal.
3. Horizontal wooden grid constructed from 200 x 300mm recycled wood batons, interlocked and joined using dowelling.
4. Glulam secondary structure, 1500 x 400 x 20000mm lengths set on 850 x 500mm I beam structure.
5. Steel I beam grid (15000 x 15000mm) centres, section 850 x 500mm, bolted connections.
6. Aluminium window frame header 1150 x 600 x 15000 mm lengths, steel construction coated in weather resistant.
7. Steel mullion (200 x 200mm) sections, (2760 x 2900mm) grid.
8. Steel angle section welded and bolted to secure frame.
9. Three steel column sections (850 x 500 x 10000mm) stacked and bolted at ends to form light load-bearing roof tie.
10. Steel casing 900 x 550mm.
11. Fixed base steel column in pocket to accommodate large bending moments, bolted shoe construction.
12. Pile foundation (1143 x 1143mm).
13. (500 x 500mm) internal column structure.
14. Hard-wearing concrete screed tiles.
15. Prefabricated concrete floor blocks, 1840 x 340 x 15000mm.
16. Horizontal I beam floor structure (545 x 580 x 15000mm) section.



Zero Carbon Cycle Layer

Bamboo Bicycle Plant & Eco Cycle Hire Masterplan



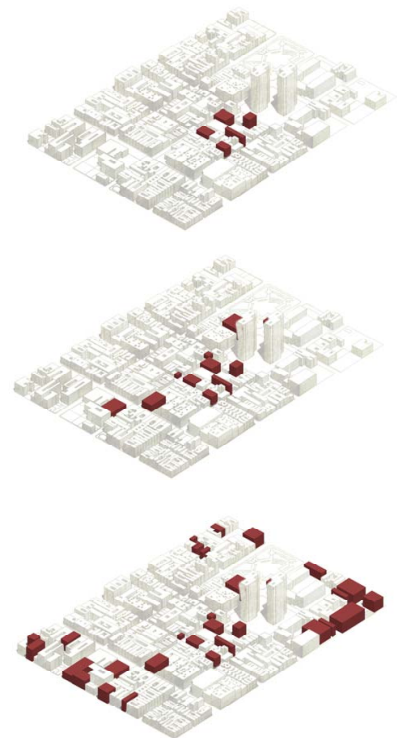
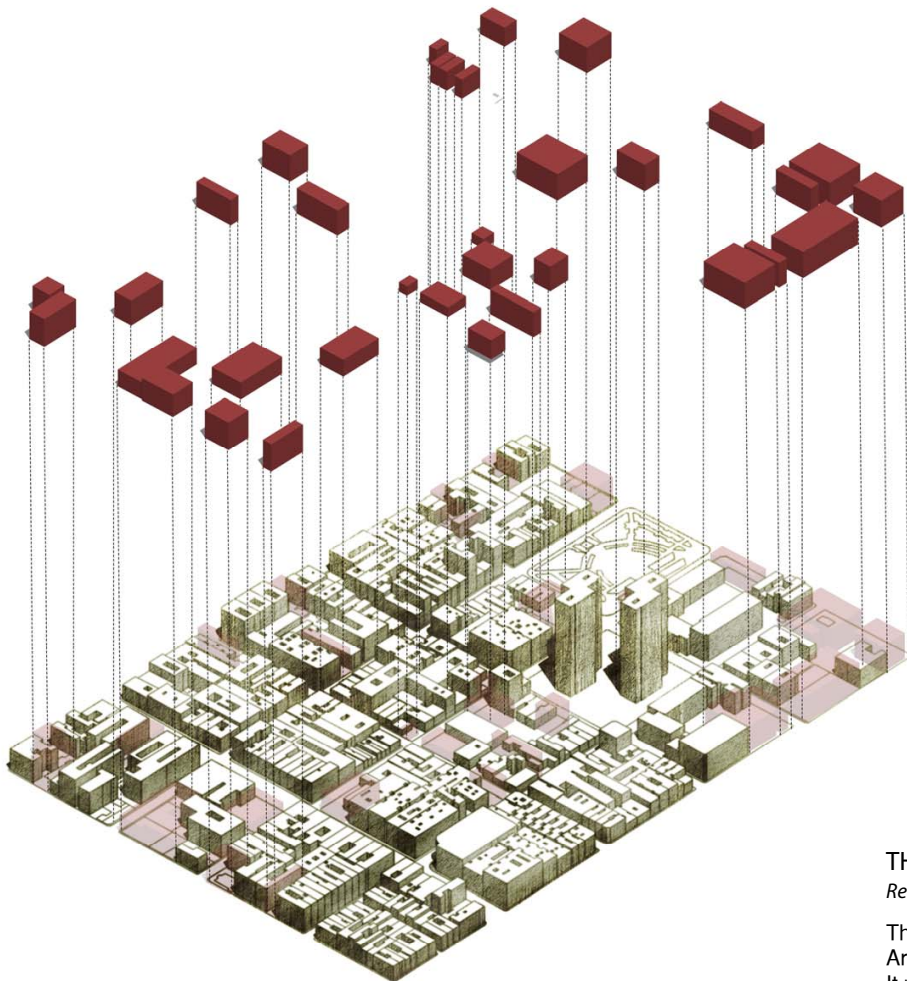
BAMBOO BICYCLE PLANT

RIBA Part I Thesis

My third year thesis aimed to exemplify how cities can become self-regulating organisms, in an age where they are dependent on high energy supplies and largely unconnected inputs and outputs.

The Rebirth of Havana

Urban Conservation and Self-Sufficient City Masterplanning



THE REBIRTH OF HAVANA

Re-stitching the metropolis through ecological redevelopment

The Rebirth of Havana is a book developed during the MA in Architecture and Urbanism as a culmination of my research. It presents a rich manifesto for Centro Habana, one of the most dense and deprived municipalities of Cuba's capital, that proposes to transform the decaying urban realm into a 'self-sufficient laboratory' and test bed for renewable technologies and sustainable living practices.